



Winter Fuels Conference
October 7, 2008: Washington, DC

Coping with Gulf Coast Hurricanes: Are We Ready for Winter?

Patricia Hoffman

Principal Deputy Assistant Secretary

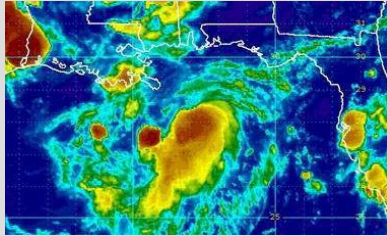
Office of Electricity Delivery and Energy Reliability



U.S. DEPARTMENT OF
ENERGY

Disastrous Hurricanes of 2008

Tropical Storm Edouard:
Edouard made landfall near the Texas/Louisiana border, causing some offshore production and ports to shut.



August 5, 2008

Tropical Storm Hanna:
Hanna made landfall at the North Carolina-South Carolina border at 3:20 AM EDT, resulting in electricity outages.



September 6, 2008

Hurricane Season 2008

July 23, 2008

Hurricane Dolly:
Dolly made landfall near the Texas-Mexico border as a Category 2 hurricane at 2 PM EST.

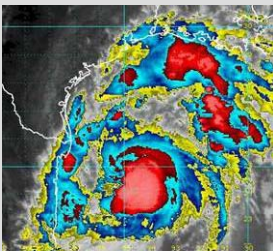


September 1, 2008

Hurricane Gustav:
Gustav made landfall as a Category 2 Hurricane near Morgan City, Louisiana, at approximately 1 PM EDT. The flooding through Louisiana and impacts to petroleum, natural gas, and electricity infrastructure in Louisiana and Mississippi have been significant.

September 13, 2008

Hurricane Ike:
Ike made landfall near Houston, Texas, at 3:00 AM EDT as a strong Category 2 hurricane, resulting in devastating shutdowns of oil & gas assets, electricity outages, and the evacuation of Houston.



Petroleum Outages from 2008 Hurricanes



Petroleum Production, Refining & Pipelines	Pre-Gustav Production	Worst Day Outages		Outages 3 Weeks Later
		Gustav	Ike	
	8/28/2008	9/2/2008	9/14/2008	10/6/2008
Crude Oil Production				
Million Barrels per Day	1.3	1.3	1.3	0.6
% of Gulf Production	100%	100%	100%	46%
% of U.S. Production	26%	26%	26%	12%
Refining				
Gulf refineries (number)	33	14	15	2
Million Barrels per Day	7.5	2.7	3.9	0.4
% of Gulf Capacity	100%	35%	51%	6%
% of U.S. Capacity	43%	15%	22%	2%
Petroleum Pipelines				
Crude Pipelines Shutdown	None	LOOP; Capline; Marathon; Sunoco	Marathon; Sunoco; Genesis	None
Crude Pipelines Reduced	None		LOOP; Capline	Sunoco
Product Pipelines Shutdown	None	Centennial	Centennial; NuStar; Explorer; Longhorn;	None
Product Pipelines Reduced	None	Colonial; Plantation	Seaway; Enterprise Colonial; Plantation; Magellan; TEPPCO; Dixie	Centennial

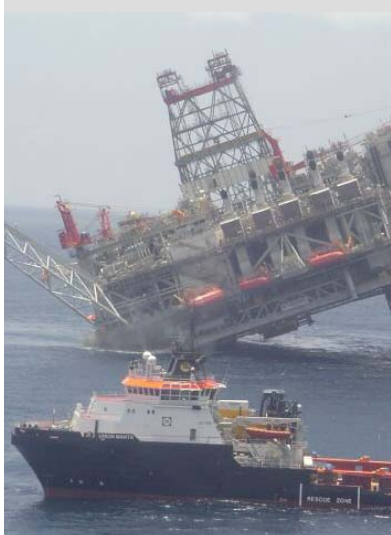
Sources: EIA, MMS, and DOE
Hurricane Situation Reports
Photo: Entergy.



Winter Fuels Conference October 7, 2008

Natural Gas Outages from 2008 Hurricanes

Natural Gas Production, Processing & Pipelines	Pre-Gustav Production 8/28/2008	Worst Day Outages		Outages 3 Weeks Later 10/6/2008
		Gustav 9/2/2008	Ike 9/14/2008	
Natural Gas Production				
Billion Cubic Feet per Day	7.4	7.1	7.3	3.0
% of Gulf Production	100%	95%	98%	41%
% of U.S. Production	14%	13%	14%	6%
Processing				
Gulf processors (number)	97	25	30	5
Billion Cubic Feet per Day	25.7	16.1	14.5	3.2
% of Gulf Capacity	100%	63%	57%	12%
% of U.S. Capacity	33%	21%	19%	4%
Interstate Longhaul Pipelines				
Pipelines Shutdown	None	None	None	None
Pipelines Reduced	None	ANR; Columbia Gulf; Gulf South; NGPL America; Northern NG; Southern NG; Tennessee Gas; Texas Eastern; Texas Gas; Transcontinental; Trunkline	ANR; Columbia Gulf; Gulf South; NGPL America; Northern NG; Southern NG; Tennessee Gas; Texas Eastern; Texas Gas; Transcontinental; Trunkline	None



Source: MMS and DOE Hurricane Situation Reports.
Photo: Roanoke Slant.



Winter Fuels Conference October 7, 2008

Electricity Outages from 2008 Hurricanes



State	Million Customers	Worst Day Outages		3 Weeks Later 10/6/08
		Gustav 9/2/08	Ike 9/14/08	
Arkansas	1.5	0.1	0.2	-
Louisiana	2.1	1.2	0.3	-
Mississippi	1.4	0.1	-	-
Texas	10.7	-	2.5	<0.1
Other States*	27.5	-	4.3	-
Total	43.3	1.4	7.3	<0.1

Note: * includes Illinois, Indiana, Kentucky, Michigan, Missouri, New York, Ohio, Pennsylvania, & West Virginia.

Source: State Emergency Operations Centers, company web sites, & Energy Assurance Daily.

Photos: Entergy.



Winter Fuels Conference October 7, 2008

DOE Response to 2008 Hurricanes

- Deployed staff throughout Gulf and East Coast regions
- Worked with Environmental Protection Agency to issue and extend gasoline and diesel fuel waivers in many states
- Worked with Department of Transportation on pipeline issues
- Made loans of U.S. Strategic Petroleum Reserve crude and requested International Energy Agency supplies
- Assisted with coordination of electricity supply to priority industries in damaged areas
- Secretary of Energy issued an order under Section 202 of the Federal Power Act to allow one electric utility to supply power to another
- Monitored developments and issued authoritative Situation Reports
- Assessed potential infrastructure impacts before landfall of each hurricane
- Monitored and coordinated fuel supply issues with States in Southeast region

Stay Warm, Save Money

Things to do in the Fall

- Look for [assistance](#) from your utility or state
- Conduct an [energy audit](#)
- Have your [heating system serviced](#)
- Find and seal your [air leaks](#)
- Check your [insulation](#) and add more as needed



Web site provides:

- The Energy Savers Blog – a place for consumers to learn about and discuss energy efficiency and renewable technologies at home, on the road, and in the workplace.
- Simple no-cost and low-cost tips to save energy this winter
- Financial assistance for energy-saving improvements



Thank You

Questions ?

For public information visit:

<http://www.oe.energy.gov/organization.htm>

Patricia Hoffman, Principal Deputy Assistant Secretary,
Office of Electricity Delivery and Energy Reliability, U.S.
Department of Energy

patricia.hoffman@hq.doe.gov



Winter Fuels Conference October 7, 2008