

Investing in Georgia's Energy, Land, and Water Resources

GEFA Solar Resiliency Technical Assistance Program

June 2022





Motivation to Focus on Resiliency

GEFA serves as Georgia's lead agency for ESF-12, in coordination with the Georgia Emergency Management Agency.

Tropical Systems:

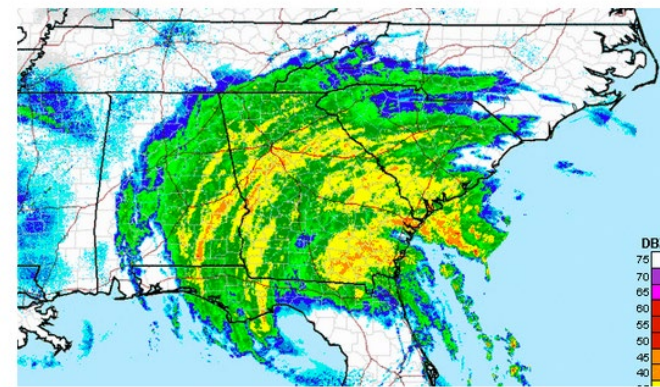
- Fuel supply monitoring during coastal evacuations
- Monitoring state fuel tank supplies
- Information sharing with private industry – fuel and electric
- Evacuation routes
- State government activities
- Reporting private sector preparedness actions to the state
- Monitoring electrical outages and fuel supply post-landfall
- Coordinating priority electric restoration
- Outage impact analysis

Motivation to Focus on Resiliency

Matthew (2016)



Irma (2017)



Tropical Storm Irma as shown at National Weather Service radar.

Michael (2018)



Investing in Georgia's Energy, Land, and Water Resources

Solar Resiliency Technical Assistance Program

Provide technical assistance and funding to local governments to improve resiliency at critical facilities using solar + battery backup.

1. Stakeholder engagement
2. RFQ for Engineering Consultant
3. Workshop Development

Phase 1: Solar Resiliency (Online...) Workshop

Originally planned as a full day in person event.

Define resiliency, solar and battery technology overview, examples of critical facilities, realistic load expectations during an outage.

Solar Resiliency Technical Assistance Program

Phase 2: Feasibility Studies

- Proposed Sites
- List of critical loads
- Discussion of any obvious impediments to solar plus battery storage solutions
- Proposed Solution
- Suitable technology recommendations
- Economic Analysis
- Description of how the proposed system will work during a 36-hour grid outage
- Summary and Recommendation (Including any recommendations for procurement and financing strategy)

Town of Toombsboro	Athens-Clarke County	City of Decatur
Marion County	Jones County	City of South Fulton
Dougherty County	City of Forest Park	City of Savannah

Solar Resiliency Technical Assistance Program

Phase 3: Funding up to 85% of the balance of solar and battery backup at critical facilities up to a maximum of \$200,000.

Community	Solar kW	GEFA Max Award
City of Decatur	100 kW	\$200,000
Liberty County Schools	35 kW	\$127,500
Athens Clarke County	52 kW	\$200,000
Douglas County Schools	70 kW	\$150,000
City of South Fulton	30 kW	\$99,000

Cobb County BOC	56.3 kW	\$150,000
City of College Park	89.6 kW	\$199,811
Savannah Chatham PSS	60 kW	\$187,500
Liberty County Schools	40 kW	\$170,000
City of Smyrna	57.6 kW	\$176,250
Habersham County	83.2 kW	\$175,815
City of Winterville	33 kW	\$105,000

Solar Resiliency Technical Assistance Resources

- **RFQ for Engineering Consulting Services:**
<http://ssl.doas.state.ga.us/PRSapp/bid-documents/2092800928-20004-ERD249306.pdf>
- **Solar Resiliency Best Practices Guide:**
<https://gefa.georgia.gov/document/document/georgia-solar-resiliency-best-practices-guide/download>
- **Solar Resiliency RFP Template:**
<https://gefa.georgia.gov/document/document/ga-solar-resiliency-rfp-template/download>
- **Solar Resiliency Technical Assistance Webinar:**
<https://gefa.georgia.gov/document/document/solar-resiliency-webinar-presentation/download>

Solar Resiliency Technical Assistance Resources

- **QuickBase Application for Feasibility Study:**
<https://georgiaenvironmentalfinanceauthority.quickbase.com/db/bqduk3pkr?a=dr&r=b&rl=ck>
- **QuickBase Application for Solar Resiliency Funding:**
<https://georgiaenvironmentalfinanceauthority.quickbase.com/db/brn5keq3z?a=nwr&originalQid=td>

Investing in Georgia's Energy, Land, and Water Resources

Kelly Cutts
kcutts@gefa.ga.gov

June 2022

